



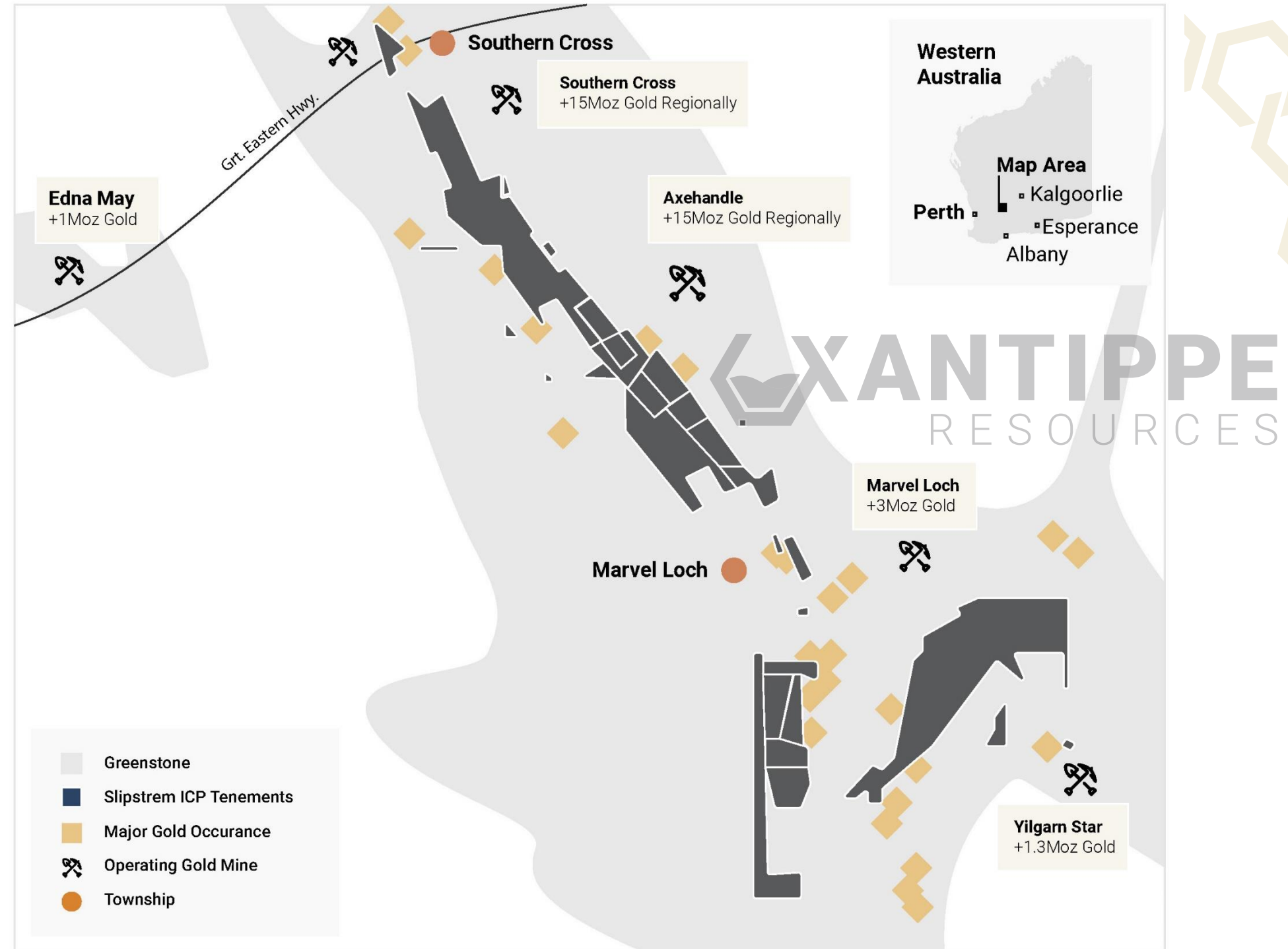
**Gold exploration in the renowned
WA region of Southern Cross**

ASX  XTC

**INVESTOR
PRESENTATION
MAY 2020**

EXECUTIVE SUMMARY

- A strategic, contiguous ground holding in the gold-rich Southern Cross Greenstone Belt of WA
- Prolific gold mining region with +15Moz gold produced to date and existing processing infrastructure
- 30km of sheared greenstone belt
- Maiden drilling completed mid-March with active exploration schedule
- Enterprise value of c\$5m enables material leverage to exploration success
- Re-energised business, focussed on building a long-term WA gold company



COMPETITIVE ADVANTAGE

LOCATION

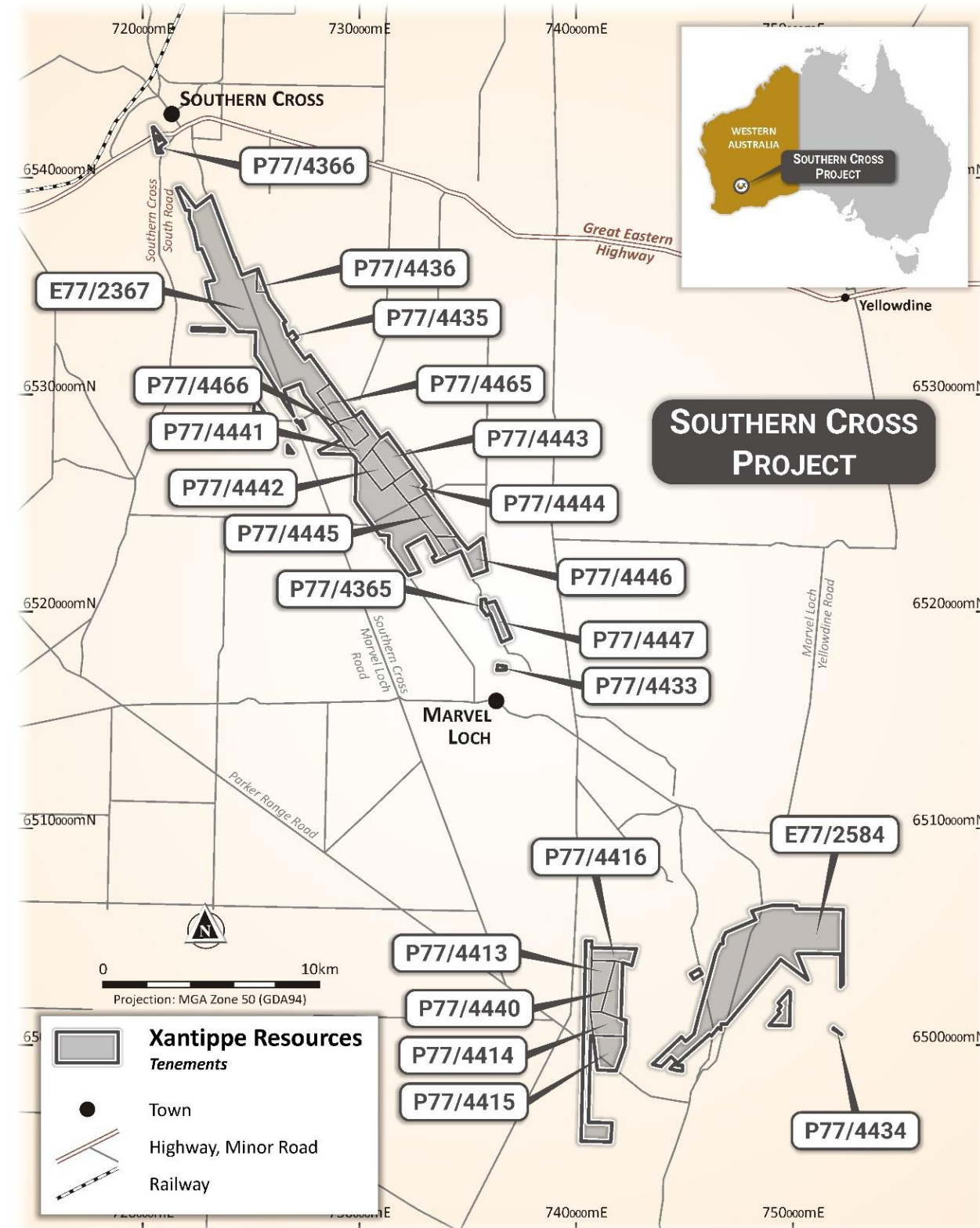
- 25km unbroken stretch of highly prospective tenements
- Located in the Southern Cross Greenstone Belt
- 380km east of Perth
- Within Archean Yilgarn Craton

SURROUNDING TENEMENTS

- Over 150 known gold deposits
- Over 15Moz of gold endowment
- Proximate to major mines, including:
- Edna May, Marvel Loch & Yilgarn Star

PROJECT AREA SERVICES

- Sealed Roads
- Grid Power
- Scheme Water
- Railroad
- Town Amenities



GOOD NEIGHBOURHOOD

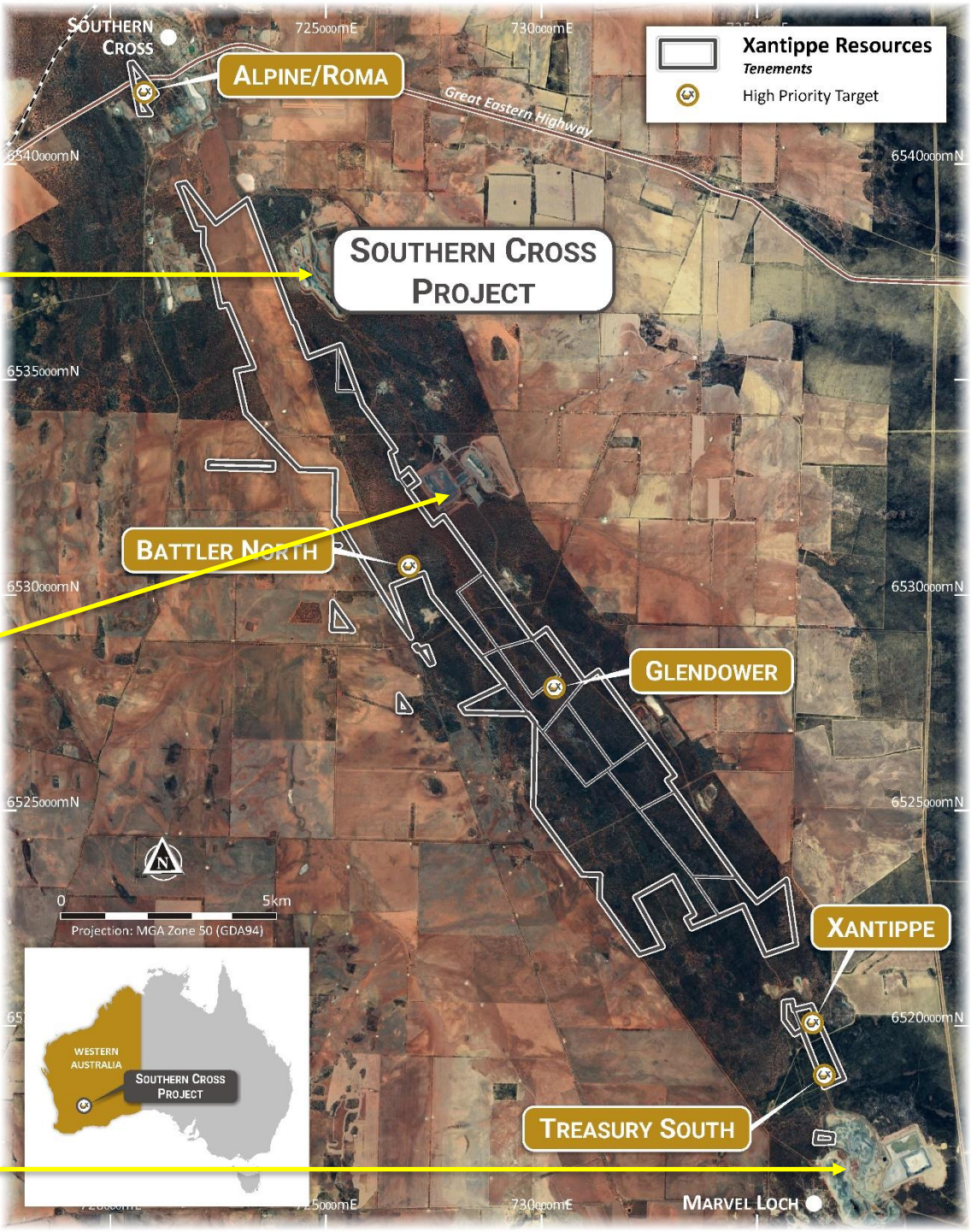
FRASERS



AXEHANDLE



MARVEL LOCH

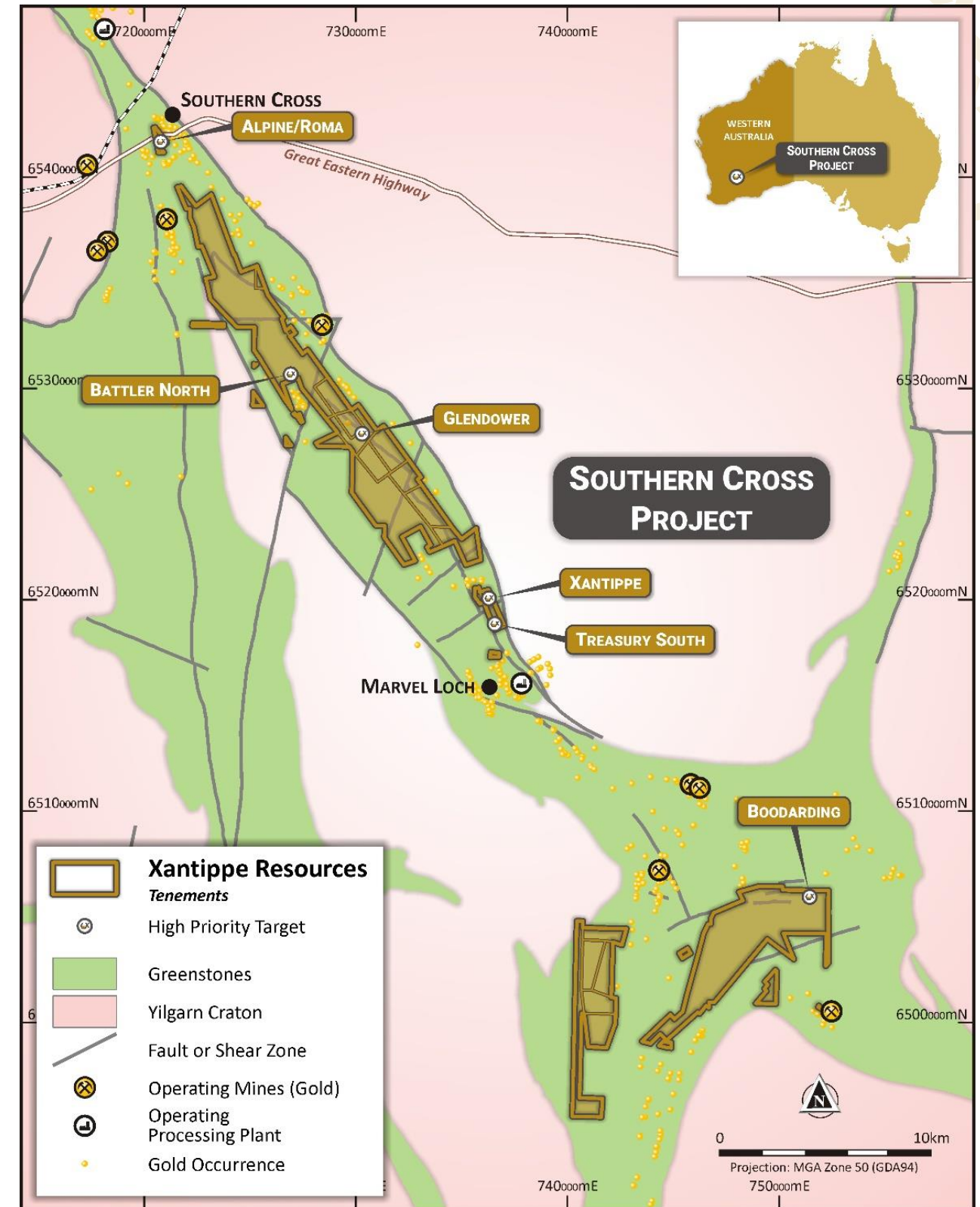


HIGH PRIORITY TARGETS

- Historic exploration identifies numerous shallow, high grade gold targets
 - Maiden drilling programme confirms broad mineralisation across 16 holes at:
 - Xantippe
 - Treasury South
 - Glendower
 - Additional RC drilling planned at three targets:
 - **Boodarding**

Historical results include:

 - LKD391: 3m @ 14.8 g/t Au from 94m (inc 1m @ 32.83 g/t Au)
 - LKA247: 3m @ 5.94g/t Au from 63m
 - **Battler North**
- Historical results include:
- SCRC 1 - 4m @ 4.60g/t Au from 57m (inc 1m @ 12.8g/t Au)
 - SCRA066 - 3m @ 4.24g/t Au from 58m (inc 1m @ 10.55g/t Au)
- **Alpine/Roma**
- Historical results include:
- ALP10 - 5m @ 3.30g/t Au from 39m (inc 1m @ 12.70g/t Au)
 - RDH04 - 20m @ 1.59g/t Au from 58m



XANTIPPE AND TREASURY SOUTH



- The Xantippe and Treasury South prospects are located approximately 4km north west of the town of Marvel Loch
- Easily accessible via well maintained unsealed roads
- There are a series of old workings present within tenement holding which date back to the early 1900's – no modern-day exploration
- No drilling below 100m
- Strategically located within a short distance of Marvel Loch and all its amenities including a large operating gold processing mill

Historical Drilling Results include:

- 13m @ 4.69 g/t Au from 38m (inc 1m @ 30.35 g/t Au)
- 3m @ 17.23 ppm Au from 19m (inc 1m @ 28.43 g/t & 1m @ 21.93 g/t Au)
- 5m @ 10.58 g/t Au (inc 1m @ 11.40g/t Au)
- 5m @ 4.84 g/t Au (inc 2m @ 25.18g/t Au)
- 4m @ 2.82 g/t Au (inc 3m @ 8.25ppm Au)



GLENDOWER



- The Glendower Gold Mine is 10 kilometres north of Marvel Loch
- Consists of two relatively shallow and narrow pits known as Glendower North and Glendower South.
- Gold was discovered in the area in 1910, but since lacks modern exploration
- No drilling has occurred beneath 100m
- Historical high-grade production of 360t at 18.6 g/t gold.

Historical Drilling Results include:

- 9m @ 28.41 g/t Au from 33m (inc 3m @ 81.15g/t Au).
- 2m @ 4.06 g /t Au from 43m.
- 4m @ 1.24 g/t Au (inc'l 1m @ 7.72g/t Au) from 12m.
- 1m @ 2.14 g/t Au from 22m.
- 8m @ 3.83 g/t Au (inc'l 1m @ 4.77g/t Au) from 24m.

UPCOMING PROGRAM

Phase 1 was completed in April 2020 and defined former mineralised zones across three target areas – Glendower, Xantippe and Treasury South.

Phase 2 will comprise the following:

- Implement the recommendations of the high-level data review undertaken by Expedio where all historical data will be subjected to a check and validation process before it is entered into a master database
- Consolidate and merge ground magnetic surveys completed with publicly available historical datasets and conduct advanced processing and imaging of merged magnetic datasets. This will be supplemented by any new data that can be purchased or redone to provide a complete survey at a 20m spacing.
- Conduct a geological review and target update, utilising the newly processed ground magnetic dataset.

Phase 3 will immediately follow Phase 2, and will comprise drill evaluation of at least 3 targets as defined as most prospective.

It is expected that Phase 3 will be completed early in Q3 2020.

WHY INVEST?



XANTIPPE RESOURCES

Change of name and focus to reflect the emphasis on the recently acquired Southern Cross gold project 380km east of Perth.

With an EV of c\$5m, XTC provides high leverage to exploration success



KOREA

The Company will maintain its various interests on the Korean peninsula, particularly in Graphite and Base Metals, as it seeks joint venture partners to realise significant value in a high tech global manufacturing industrial country.



COMPELLING

The potential to string together a number of high grade gold systems. Located in Southern Cross Greenstone Belt, historically the region has produced in excess of 15Moz gold



DRILLING

Active exploration program with maiden drilling confirming broad zones of gold mineralisation with follow-up geophysical work underway and additional drilling to follow

BOARD MEMBERS

PHILLIP JACKSON CHAIRMAN

- 25 years international resources experience
- Legal and contracts agreements expertise
- Commercial and contract law focus

RICHARD HENNING MANAGING DIRECTOR

- 30 years global experience in resources and technology commercialisation
- Formerly with Extract Resources in Namibia and Stonehenge Metals in Korea
- Commercial focus, specialising in international business development and stakeholder engagement

GREG CUNNOLD NON-EXECUTIVE DIRECTOR

- Geologist with over 25 years experience in the international exploration industry
- Part of the Gabriel Resources team to develop the 14Moz Rosia Montana gold project in Romania
- A member of the Australian Institute of Geoscientists (MAIG) and the Australian Institute of Mining and Metallurgy (AusIMM)

YOUNG YU NON-EXECUTIVE DIRECTOR

- International business advisor with business interests in Korea and Australia
- Formerly worked for the Australian Government as Trade Commissioner in Seoul
- Chairman of Australian Korea Business Council of WA

CORPORATE – ASX XTC

COMPANY STRUCTURE

| | |
|---------------------------|---------------|
| Shares on issue | 3,324,564,406 |
| Options on issue | |
| <i>Unlisted</i> | 185,300.000 |
| <i>Listed at \$0.01</i> | 95,272,994 |
| Share price at 22.05.2020 | \$0.002 |
| Market Capitalisation | \$6.65m |
| Cash at 31.03.2020 | \$1.1m |
| Enterprise Value | \$5.75 |



MAJOR SHAREHOLDERS

| | |
|--------------------------------------|--------|
| Greg Cunnold (XTC non exec Director) | 11.57% |
| Slipstream Resources Investments | 9.56% |
| Aurora Minerals | 5.15% |
| Other top 20 | 32% |

CONTACT

Richard Henning

+61 411 112 164

+61 8 6143 1840

rhenning@xantippe.com.au

www.xantippe.com.au



Forward looking Statements

This report contains certain forward-looking statements. These forward-looking statements are not historical facts but rather are based on Xantippe Resources Ltd's current expectations, estimates and projections about the industry in which Xantippe Resources Ltd operates, and beliefs and assumptions regarding Xantippe Resources Ltd's future performance. Words such as "anticipates", "expects", "intends", "plans", "believes", "seeks", "estimates" "potential" and similar expressions are intended to identify forward-looking statements. These statements are not guarantees of future performance and are subject to known and unknown risks, uncertainties and other factors, some of which are beyond the control of Xantippe Resources Ltd, are difficult to predict and could cause actual results to differ materially from those expressed or forecasted in the forward-looking statements. Xantippe Resources Ltd cautions shareholders and prospective shareholders not to place undue reliance on these forward-looking statements, which reflect the view of Xantippe Resources Ltd only as of the date of this report. The forward-looking statements made in this report relate only to events as of the date on which the statements are made. Xantippe Resources Ltd does not undertake any obligation to report publicly any revisions or updates to these forward-looking statements to reflect events, circumstances or unanticipated events occurring after the date of this report except as required by law or by any appropriate regulatory authority.

Competent Persons Statement

The historical exploration results relating to the Southern Cross Project reported in this announcement are based on, and fairly represent, information and supporting documentation prepared by Mr Jeremy Peters, FAusIMM CP (Mining, Geology). Mr Peters is a geologist and mining engineer and is an employee of Burnt Shirt Pty Ltd and has extensive professional experience with the geology of the Western Australian Goldfields. Mr Peters consents to the form and context in which the historical exploration results are presented in this announcement.

Mr Peters cautions that these results are historical in nature and may not have been reported in accordance with the JORC Code or its predecessors. Mr Peters is satisfied that these results were collected in accordance with then-current industry standards and while not definitive, are indicative of the tenor and nature of mineralisation present.

